



OR Remote Manager
Software
Installation Manual
(Windows PC)

Table of Contents

- Parts Included 4
- Install FTDI driver 4
- Install the OR Remote Manager application..... 5
- Install the .NET Framework (Ver 4.5) 6
- How to use the Remote Manager Application 7
- Warranty 7

DISCLAIMER

- While every effort has been made to ensure that the information contained in this guide is accurate and complete, no liability can be accepted for any errors or omissions.
- OR Technologies reserves the right to change the specifications of the hardware and software described herein at any time without prior notice.
- No part of this guide may be reproduced, transmitted, transcribed, stored in a retrieval system or translated into any language in any form, by any means, without the prior written permission of OR Technologies.
- OR Technologies makes no warranties for damages resulting from corrupted or lost data due to a mistaken operation or malfunction of the camera, the software, the OR Tech lighting systems, personal computers or peripheral devices.



Remote Manager Software

Please make sure the system arrives in perfect condition and all parts are included. Contact us immediately if there is any damage or if you are missing any parts.

WARNING

IF YOU ARE USING THE SYSTEM IN A COUNTRY THAT USES 220V POWER (MANY COUNTRIES OUTSIDE OF THE USA), YOU MUST POWER THE SYSTEM USING A 220V/110V STEP DOWN TRANSFORMER. DO NOT PLUG DIRECTLY INTO YOUR WALL OUTLET. THIS WILL DAMAGE THE INTERNAL ELECTRONIC COMPONENTS AND VOID YOUR WARRANTY.

SI SE UTILIZA EL SISTEMA EN UN PAÍS QUE UTILIZA CORRIENTE DE 220V (MUCHOS PAÍSES FUERA DE LOS EE.UU), SE DEBE CONECTAR EL SISTEMA USANDO UN TRANSFORMADOR REDUCTOR DE VOLTAJE DE 220V A 110V. NUNCA CONECTE DIRECTAMENTE A LA TOMA CORRIENTE DE PARED. ESTO PUEDE DAÑAR LOS COMPONENTES ELECTRÓNICOS INTERNOS E INVALIDAR LA GARANTÍA DEL EQUIPO.

SI VOUS UTILISEZ LE SYSTÈME DANS UN PAYS QUI UTILISE LA PUISSANCE 220V (BEAUCOUP DE PAYS EN DEHORS DES USA), VOUS DEVEZ ALIMENTER LE SYSTÈME EN UTILISANT UN 220V/110V DÉMISSIONNER DE TRANSFORMATEUR. NE PAS BRANCHER DIRECTEMENT SUR VOTRE PRISE MURALE. CELA ENDOMMAGERA LES COMPOSANTS ÉLECTRONIQUES INTERNES ET ANNULER VOTRE GARANTIE..

VERWENDEN SIE DAS SYSTEM IN EINEM LAND, DAS 220V STROMVERSORGUNG (VIELE LÄNDER AUßERHALB DER USA) VERWENDET, MÜSSEN SIE MACHT, DAS SYSTEM MIT EINER 220V/110V STEP-DOWN TRANSFORMATOR. NICHT DIREKT AN DIE STECKDOSE ANSCHLIEßEN. DAS ELEKTRONISCHE BAUTEILE BESCHÄDIGEN UND ZUM ERLÖSCHEN DER GARANTIE.

Introduction

Thank you for choosing our systems, this manual includes instructions on how to install the Remote Manager Software and connect the Photo-eBox Plus System to your computer.

Parts Included



(1) USB Cable



(1) USB Memory Storage Device

Note: Accessories and parts included may differ from those listed in this manual, please check our website (www.mkdigitaldirect.com) for the most up-to-date information

Installing Remote Manager Software

Before you setup your Photo-eBox Plus lighting system and connect the USB cable to your computer, first install the Remote Manager Software that controls the USB board inside your lighting system in the following order:

1. Install the FTDI driver.

The FTDI driver controls the main board of your system and in order for your computer to recognize it you need to install this driver before you connect it. Inside the USB memory Storage Device, you will have the following folders and Application:

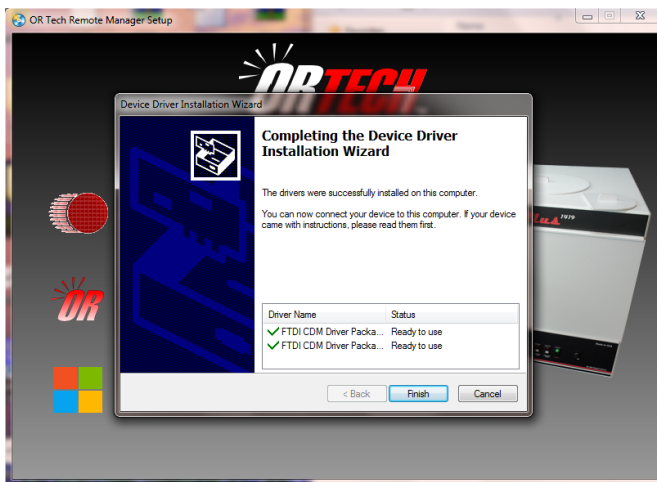
- AutoPlay (Folder)
- Autorun (Application)

Once you see the folders in the usb memory, double click on the **Autorun** application and you will get the following window:

On the OR Tech Remote Manager Setup window, please click the FTDI Board Driver to install the drivers of your Photo-eBox Plus and then click extract to begin the installation.



When you finish the installation on the FTDI Board Driver you will get the next windows, if you have a problem installing the driver, please check our support page on our website.



2. Install the Remote Manager application.

The **OR Remote Manager** application is the software that controls your Photo-eBox Plus Lighting System through your USB connection. To install this application you just need to click on the Remote Manager option in the setup window and you will receive a message when the installation is complete.



3. Install .NET Framework (Ver. 4.5)

If you have a computer with Windows XP, Windows Vista or Windows 7 and running the old version of .NET Framework on it, the OR Remote Manager application will **not work properly**, you will have to install this new version. If you are not sure what version your computer has installed, just double click on it and the setup will tell you if you need to install it or not.

3. How to use the OR Remote Manager application.



After the installation is complete you will have an icon with the **OR** logo on your desktop please double click on it to see if the software is working properly.

Once you get the menu on the left, please do the following:

a) Click Search Ports.

On the right side of the button you will have a list with the ports that are available, please select the one with the Photo-eBox Plus connected on it.

b) Click Connect.

After you click on this button you will notice that it will change to **Disconnect** which means that the PC is connected to your Photo-eBox Plus.

c) Control your Lighting System with the OR Remote Manager.

Try the different buttons on the menu to turn on or off the lights in your system, remember the only switch that has to be on at all times is the **Power Switch** located on the far right side of your system. When finished using the system please click on Disconnect button.

Note: If you get any error please check our support page on our website <http://www.or-tech.com/support.html>

Enjoy your Photo-eBox Plus Lighting System!!! Please visit our store for additional promotions and discounts. Thanks you.

ONE YEAR WARRANTY

Defective components will be replaced during the 12 month warranty period. No charge will be made for labor costs during this period. Fluorescent lamps are NOT covered by this warranty. Proof of purchase must be provided to verify the warranty status. Shipping is not included



www.mkdigitaldirect.com | info@mkdigitaldirect.com

Tel: (619) 661-0628 | Toll Free: (800) 258-6230

861 Harold Place Suite 209,
Chula Vista, California 91914